



Brandeis Marin COVID Safety Plan 2021-2022

This school COVID safety plan is Cal/OSHA compliant and aligned with all local, state and CDC public health guidelines. You may review this plan on our website at www.brandeismarin.org.

As we begin a second school year during the pandemic, it is clear that COVID-19 and its variants will be with us for the foreseeable future. This COVID safety plan details the mitigation strategies and protocols in place at Brandeis Marin. We agree with public health and educational experts locally and nationally that being at school is good for kids. The peer social connection, positive learning environment, and social-emotional support available to children in school is important to healthy childhood development. Our school's COVID safety plan is informed by and aligned with evidence-based strategies that lower the risk of exposure and allow for contact tracing if someone becomes symptomatic.

SCHOOL PRIORITIES

- 1. School will be a safe and healthy place for students, faculty, and staff.**
- 2. All students will have access to high quality, exceptional learning in a warm, nurturing community.**
- 3. Our program will be flexible and prepared in the event the school must adapt to changes in the pandemic or other environmental circumstances.**

COMMUNITY COMMITMENT TO HEALTH

Specific health and safety measures are fundamental to making our learning on campus as low risk as possible. As a community, we must all be committed to doing our part – families and school – to choose low risk activities and engage in safe and healthy behaviors. While all employees are required to be vaccinated and Marin County enjoys very high vaccination levels among the county's eligible residents, we still have a large unvaccinated population among our younger students who are not yet eligible for a COVID vaccination. We have a sacred responsibility to protect those in our community who are most vulnerable and you will see our

commitment to this responsibility spelled out in this COVID safety plan. The protocols are subject to change as public health guidelines shift.

COVID-19 HEALTH PROTOCOLS

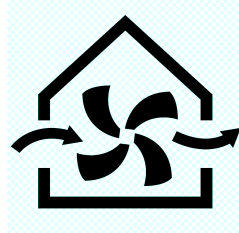
Brandeis Marin has put multiple layers of mitigation strategies in place to dramatically reduce the possibility that someone could become infected while at school. Our COVID-19 health protocols are detailed below.



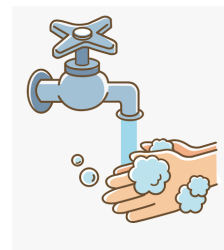
Everyone wears
an approved
face mask



Stay home when
not feeling well



Well ventilated
classrooms



Frequent
hand washing



Home-based
daily symptom
screening



Weekly school-based
COVID testing



Outdoor learning
spaces



Frequent cleaning
and disinfecting

These eight mitigation strategies have been universally recognized and validated as reducing risk of transmission of the SARS-CoV-2 virus (including the Delta variant) and other infectious diseases. Together with families, Brandeis Marin is committed to training all students and staff in these practices and making them the highest health and safety priority for our school.

Face masks

Brandeis Marin requires all faculty, staff, students and visitors to campus to wear a face mask at all times indoors and outdoors. Please ensure your child comes to school every day with a face covering that they know how to wear. According to the California Department of Public Health, a cloth face covering is a material that covers the nose and mouth which can be secured to the

head with ties or straps. Cloth face coverings can be made of a variety of materials, such as cotton, silk, or linen. **Face masks with a ventilation opening and gators are not approved face masks.** The requirement to wear face-covering applies to all students, including students in kindergarten, 1st and 2nd grade. If you believe this guidance is contraindicated for your child, please contact our Public Health Liaison (health@brandeismarin.org) for an accommodation. A face shield may be approved for those students.

The school will have single-use face masks on hand to give to students as needed.

Staying home when sick

This is perhaps the single most important action families can take to prevent the spread of illness in our community. The highly contagious nature of this virus means we all must take extra steps to keep one another safe. Families are strongly encouraged to closely monitor the health of all members of the household. **When your child is exhibiting symptoms of infectious illness, please keep your child home.** We understand that staying home when there is a question about whether your child is exhibiting symptoms is significant. Together we can reduce the risk of exposure to illness by committing ourselves to staying home when sick.

Moreover, stay home if someone in your household has come into contact with someone who is COVID positive. Please email our Public Health Liaison (health@brandeismarin.org) if you or your child has COVID-19 symptoms or has come into contact with someone who is COVID positive.

A student who comes to school with symptoms of infectious illness such as fever (100.4F or above), cough, shortness of breath, runny nose, aching throughout the body, vomiting or diarrhea will need to go home. Parents will be contacted and asked to pick up their student within 30 minutes.

When each of us makes the choice to stay home when sick, we will make school a healthier place for everyone.

Well ventilated classrooms

Classrooms are very well ventilated. Two HEPA air purifiers are operating all day in each classroom. In addition, the heating and air conditioning system has been upgraded with MERV 13 air filters. Window fans have been installed in all windows to promote ventilation. All classrooms will be regularly monitored for adequate ventilation using our air quality and CO₂ monitors.

Within all school classrooms, physical distancing will be implemented by spacing desks. Teachers will maintain physical distance where practicable.

Frequent handwashing

We have installed four additional exterior hand washing stations on Swig Field to allow students to wash their hands more regularly. In addition, all students will apply hand sanitizer (assisted by a Brandeis Marin staff person) prior to entering school each morning.

Sanitation stations equipped with a full supply of personal protective equipment (PPE) including extra face masks, wipes and hand sanitizer will be positioned in each classroom as well as in the hallways and in the lobby of the school. Each classroom also has its own supply of first aid equipment, including bandaids so kids will not need to walk to the front office to get them. We will continue to keep fully-stocked emergency bags in each classroom as well.

Home-based Daily Health Screening

The school requires a daily health screening for everyone entering campus. The SchoolPass app is used to complete the daily health screening and to communicate late arrivals, early pickups and other changes to your student's schedule. We urge everyone to stay at home when not feeling well. In case of fever of 100.4F or higher, students, faculty, and staff will need to stay home until fever-free for 24 hours without the aid of fever-reducing medication. Students, faculty, or staff who exhibit the following symptoms: persistent runny nose, cough, sore throat, shortness of breath, chills, or muscle pain, will be sent home immediately and are required to stay home until they are symptom-free for 24 hours, or with a copy of a negative COVID PCR test.

Weekly school-based COVID testing

The Delta variant is highly contagious and we are seeing evidence of increasing occurrences of "breakthrough" cases of vaccinated individuals and among younger, unvaccinated children. In an effort to protect the most vulnerable in our community, we will be conducting weekly COVID PCR testing on campus. There is no charge for this testing. A team of nurses will be on campus each week on Mondays to conduct the testing during school hours and results will be shared by the lab directly with parents via email. If a student tests positive, that student will need to follow public health guidelines for quarantine. If a student misses the Monday testing, a negative COVID PCR test will need to be shared with health@brandeismarin.org before your student can return to school.

Outdoor spaces

Outdoor spaces, including classrooms, will be heavily utilized for learning, as well as physical activity and recreation. During recess and lunch these spaces will be used by students to eat outdoors in a physically distanced environment.

Cleaning

We will maintain a rigorous daily cleaning schedule. This cleaning schedule complies with Cal/OSHA and CDC standards for cleaning and disinfecting workplaces and schools. Surfaces will be cleaned and sanitized during the day. A deep cleaning (including disinfecting) will occur at the end of each day (and more frequently for spaces such as restrooms). All classrooms and

offices will be stocked with a cleaning supply kit to facilitate regular cleaning of heavily used surfaces (such as desks, doorknobs, countertops, etc.).

All disinfectants are approved by EPA for effectiveness against COVID-19 and will be kept out of the reach of children.

**Procedure for responding to COVID or
suspected COVID cases in our community**

Scenario	Action	Communication
Student or staff member exhibits COVID-19 symptoms or answers “yes” to health screening questions or has a temperature of 100.4 or above	Student or staff member is sent home or stays home Classroom remains open	Family is advised to contact physician
Family member or someone in close contact tests positive for COVID-19	Student or staff member sent or stays home; family in quarantine Classroom remains open	Get tested Notify class
Student or staff member tests positive for COVID-19	Close contacts quarantine for 14 days from last known exposure *Fully vaccinated close contacts do not need to quarantine** Classroom CLOSED for 10 days from last exposure (distance learning) School remains OPEN	Close contacts gets tested Notify class
Student or staff member tests negative for COVID-19 after symptoms or confirmed close contact	Return to school 24 hours after symptoms resolve 10-day quarantine required for close contact with COVID-19 positive case School/Classroom OPEN	Notify class

Community Responsibility and Partnership

Families play a vital role in keeping our campus safe. Your ongoing support and cooperation make it possible for us to keep school safe and healthy for everyone. The effort we put into maintaining these layered mitigation strategies on campus work best when students and their families exercise a similar level of caution in the evenings and on the weekends. For this reason, we urge you to follow all state and local guidelines regarding wearing a face covering and choosing low risk activities.

OTHER PUBLIC HEALTH GUIDANCE

Travel advisory

After out of state travel, unvaccinated students may attend school under a “modified quarantine” if they are symptom free. They must get a COVID PCR test 5 days after returning from travel. This new guidance replaces the prior requirement that unvaccinated students must stay home and self-quarantine after out of state travel. Please share the negative COVID test result with health@brandeismarin.org. If the COVID test is positive, the unvaccinated traveler must isolate for 10 days and may return to school on day 11 if they are symptom free without the use of medication. It is always important to monitor for COVID-19 symptoms, isolate and get tested if symptoms develop.

Vaccinated persons do not need to get tested or self-quarantine after out of state travel. It is always important to monitor for COVID-19 symptoms, isolate and get tested if symptoms develop.

Visitors on campus

In an effort to minimize the risk of exposure, we are adhering to Marin County Public Health guidelines to limit visitors on campus. Accordingly, drop-off will be at the curb and unfortunately, we will not be able to allow parents to walk their kids up to school. Additionally, in general, we will not be holding large in person gatherings. Large events will be fully accessible via Zoom.

We recognize and celebrate the importance of community and gathering together. We are also mindful that a significant number of our students are not yet eligible to be vaccinated. In an effort to remain connected and still keep our community safe, we will be limiting campus visitors on a regular basis and create special structured opportunities for parents to be on campus throughout the year.

Tutors who work individually with students will be allowed on campus only with prior approval from the school and only if they are fully vaccinated.

Restrooms

Our restrooms have been modified to enhance safety during the pandemic. For example, all toilets in the restrooms have had lids added to them. Additionally, we have installed touchless

soap dispensers and towel dispensers. Restrooms will be sanitized frequently throughout the day and disinfected multiple times each day. A deep clean of the restrooms will occur at the end of each day.

Kindergarten, first, and second grade each have their own dedicated restroom attached to the classroom.

Lunch program

We are pleased to be able to offer a lunch program through SchoolFoodies. All lunches are individually wrapped and may be ordered online. Please provide your child with extra snacks (even if they order lunch) and a water bottle. The school will provide individual manufacturer wrapped snacks in a pinch but it is best to be sure your student has plenty of snacks. Water fountains on campus are adapted for water bottle use only.

Transportation

Transportation is available for East Bay, San Francisco and Southern Marin families in our school-owned and operated 9 passenger vans. All riders will need to wear a face mask while in the van. Windows will be opened to allow for ventilation. The daily health screening form will need to be completed prior to entering the van.

After School Programs

Our multi-grade PM program will operate each day until 6pm and is available on a drop-off basis. We will offer an after school enrichment program starting in Q2 of the school year (due to the timing of the Jewish holidays). After School Sports and performing arts are considered higher risk activities due to the increased exhalation involved with those activities. Our protocols are fully aligned with the latest public health guidance for these particular activities.

Zero Period Music

Indoor music classes and practice that do not involve singing or wind instruments are permitted as long as everyone is fully and properly masked the entire time.

- We will maintain capacity limits on the size of banda or ensembles that meet inside the classroom. If an ensemble has more than 22 kids we will likely relocate that ensemble outside to reduce the crowding in class and the impact on ventilation.

Chorus/singing is permissible outside and as long as everyone is fully and properly masked the entire time. While masked, physical distancing is not required. Should participants be unmasked and outside, a physical distance of 6 feet must be maintained between participants.

Singing in class (as part of music class or tefillah, for example) is permitted indoors as long as everyone is masked.

After School Sports

Masks are required indoors for all participants, coaches, personnel, and spectators. Everyone must wear face masks indoors, regardless of vaccination status. Masks are required for both competition and practice, during physical education, conditioning/weightlifting, and other indoor activities, in accordance with the CDPH Guidance for the Use of Face Coverings and the Marin County Public Health Officer order requiring all people to wear masks while in an indoor public settings, including school settings.

Masks are required for all outdoor sports and PE as well.

After school sports teams are open to both vaccinated and unvaccinated students provided all participants participate in weekly COVID PCR testing and produce a negative test result.

COVID-19 can spread on and off-the-field, especially in situations when groups let their guard down and eat or socialize together with their masks off (unmasked huddles, post-game snacks, private, post-event gatherings, locker rooms, carpools). Remember to keep masks on at all times except when eating and drinking.

JCC After School

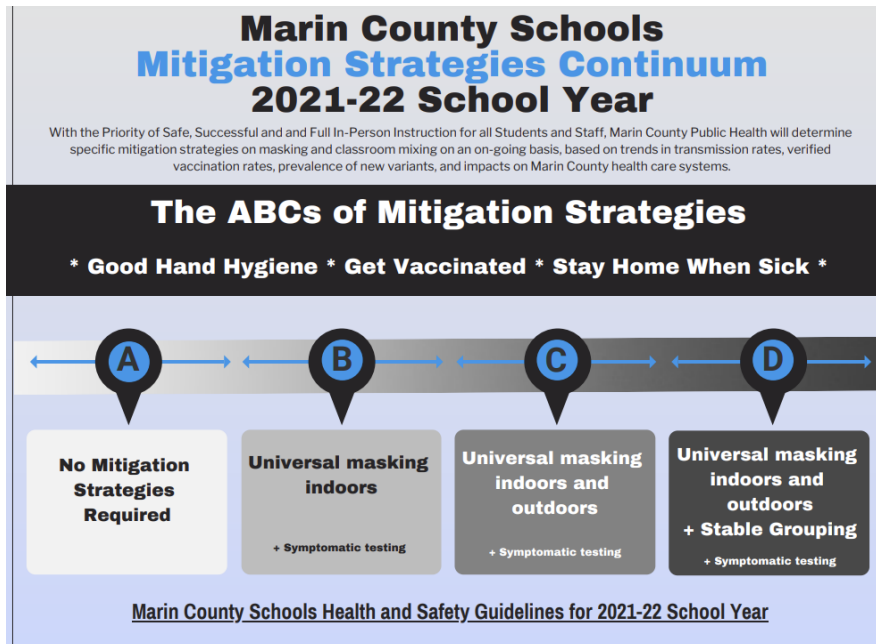
Middle school students who have permission from their parents may remain after school in the JCC. They will be required to wear masks at all times.

Field trips and Outdoor Education

Field trips and access to outdoor experiences for learning will be emphasized as much as possible this year. The status of grade-specific outdoor education trips is still to be determined.

MITIGATION STRATEGIES CONTINUUM

Marin Public Health has introduced a mitigation strategies continuum to illustrate the ways in which mitigation strategies may be tightened or loosened depending on trends in transmission rates, verified vaccination rates, prevalence of new variants, and impacts on Marin County health care systems. As of now, we are in Zone C.



Currently, there are several protective measures that are not currently recommended by public health. These may be reactivated if trends in transmission go up and additional restrictions are needed to keep our students, staff and teachers safe at school.

At this time, public health is not recommending that we enforce physical distancing at the school. Instead, we will space desks apart in the classrooms in order to create some distance between students as a protective measure.

Last year, we were required to restrict students to a stable cohort. This year, such a restriction is not currently in place and we will be permitting students to interact with students in other grades, especially during recess and lunch outside.

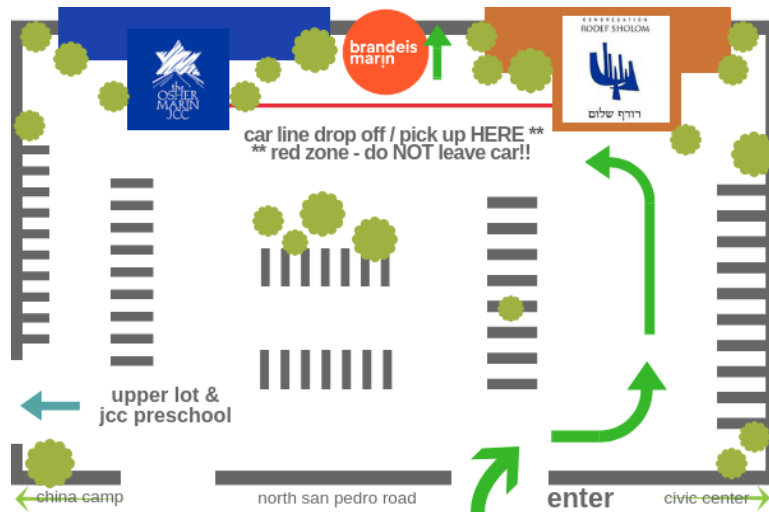
Finally, last year recess and lunch times were staggered to minimize contact between cohorts and to maximize space for outdoor physical activities. This restriction is also currently inactive but may be reactivated if circumstances warrant.

ARRIVAL AND DISMISSAL

School starts at 8am for all students and ends at 3pm (Kindergarten ends at 2pm but students may stay in our PM program until 3pm or later). We will no longer stagger our drop-off and pick-up times. All students, no matter what grade level, can be dropped off beginning at 7:45am and picked up starting at 3pm.

Arrival procedure

All students will be dropped off in front of the synagogue. Due to public health guidelines restricting visitors on campus, parents will not be permitted to walk their student(s) on campus. (To meet parents' interest in being on campus, we will organize special, structured opportunities for parents to be on campus throughout the year.)



Symptom screening on SchoolPass will be checked at the curbside before disembarking from the vehicle.

Dismissal procedure

Students will be picked up at curbside in front of the synagogue. Parents will remain in their cars using the same procedure as morning drop-off. Students will be called from their classrooms to be picked up curbside.

FLEXIBLE AND DISTANCE LEARNING

The pandemic has not changed our commitment to our educational priorities. We are committed to nurturing students' minds and hearts, tending to their academic growth, sense of awe and wonder, and emotional well-being.

During the 2021-2022 school year, all learning will be in person unless otherwise communicated.

In the event a student must quarantine due to COVID, we will provide a flexible learning option for that student.

Flexible learning is designed to prevent adverse academic impacts related to quarantine requirements for students who have been exposed to COVID-19 or who need to quarantine due to travel advisories. We will not be offering "Zoom sick days" this year. If your child is sick, your child should rest. The flexible program will look different this year than hybrid learning did last year. Flexible learning is designed to support your child's learning without Zooming into class.

What does flexible learning look like this year for individual students?

- Flexible learning will be entirely asynchronous for periods of quarantine. The student will get a box with essential learning materials (e.g. book, materials, etc.) sent home. The student's (lower school) teacher or (middle school) advisor will schedule a regular Zoom check-in with the student once per day for the duration of quarantine to support students and answer questions about school work and help students remain connected to school.

What happens if an entire class has to quarantine?

- In this case, we will provide distance learning for all students in that class. Each student will get a box with essential learning materials (e.g. book, materials, etc.). An asynchronous/synchronous schedule will be used in all grades and shared with parents and students.

Distance learning: All of our classes are prepared to transition to distance learning should the need arise. For example, if state or local officials ordered the closure of school, or in the event a class needs to close down for health and safety reasons, or in the case of a power outage or sustained poor air quality, all learning will shift to a distance learning format. We have worked to create consistent schedules in classes to make accessing learning simplified. Students will be trained in using BrandeisHome (aka Blackbaud - our learning management system) for all of their classes which will make any needed transition to distance learning smooth and simplified. Posted weekly and daily schedules, course content, materials, projects, and assignments will be fully available and easily accessible. Communication between students and teachers will happen through BrandeisHome to make it easy to access lessons, submit work, and receive individualized feedback.

Daily schedules

Classes will each have a consistent schedule that will be visible to students and parents online. Students will be taught how to access their schedules digitally in the event we need to switch to distance learning. The goal is for even our youngest students to become independent in accessing assignments, lessons, homework, and announcements.

Our program has been designed based on insights drawn from our experience during the 2020-2021 school year and the feedback we received from parents and teachers. As always, we have relied on research from public health and medical professionals, educators, architects, scientists and engineers to help us create a framework for learning that will allow us to adapt to evolving circumstances while keeping the learning process intact.

Our faculty members have been extensively trained in new pedagogical approaches that support this flexible model of learning and enables us to be flexible and adaptable to the dynamic situation around us. As always, we will welcome ongoing communication and feedback from parents and students to help us learn, adapt and improve the learning experience throughout the year.

Learning Management System (LMS) - BrandeisHome/Seesaw

All classes use BrandeisHome as a learning management system (LMS) to post content, weekly and daily schedules, course materials, projects, and assignments in all grades and all classes. In the lower school grades, Seesaw is used and accessed through BrandeisHome. In the middle school grades, course material and information is posted directly onto BrandeisHome. Every class will post course materials using a consistent, systematic structure. This will make locating the coursework simple. This common platform will provide a consistent interface across all classes. The daily and weekly schedule in each class will reveal a predictable rhythm to each day.

With common, consistent principles and a common platform underlying instruction, student learning will continue even if we must toggle between in school learning and home learning due to public health concerns or environmental conditions (such as sustained unhealthy levels of smoke).

Students (and families!) will be trained in how to use BrandeisHome in order to access learning and project materials at any time, anywhere, and to review lessons or feedback on submitted work as needed.

ADDITIONAL RESOURCES

Marin County Public Health: Public Health Guided Site-Based Classroom Instruction 2021-2022
<https://www.marinschools.org/cms/lib/CA01001323/Centricity/Domain/154/8.4.21%20Marin%20County%20Schools%2032%20Point%20Plan%20FINAL.pdf>

California Department of Public Health: COVID-19 Public Health Guidance for K-12 Schools in California, 2021-22 School Year
<https://www.cdph.ca.gov/Programs/CID/DCDC/Pages/COVID-19/K-12-Guidance-2021-22-School-Year.aspx>

CDC Travel Advisory
<https://www.cdc.gov/coronavirus/2019-ncov/travelers/travel-during-covid19.html>

Order of the Marin County Public Health Officer for the Wearing of Face Coverings in Workplaces and Public Settings
<https://coronavirus.marinhhs.org/public-health-order-august-2-2021>

